

# King of the road

Strong, simple, almost indestructible... the four-wheel drive Land Cruiser is MSF's sturdy workhorse, used since the early 1980s in our projects all over the world. Logistics training officer **Robin Vincent-Smith** explains why we couldn't do our work without them.

"The Land Cruiser's an incredible vehicle - it's basically pretty much indestructible. There are no electronics, everything's accessible, and the design has barely changed since it was invented. There's nothing to beat it - as Jeremy Clarkson proved on Top Gear when he tried to destroy one and failed.

In Brussels, we kit them out, pimp them up, then ship them to the countries where we work. When the Land Cruiser arrives in the field, you literally turn it on and drive away. It's kitted out with everything - it's plug-and-play.

The newest vehicles go to the most challenging places - to nurses doing mobile clinics deep in the bush - that's where they're most needed. The old ones go to the head of mission in the capital.

For me, as a logistician, they're a lifeline. You can't move in the projects we work in unless you've got Land Cruisers. You fall in love with them after a while. I give them all names when I'm in the field, and I know which one is coming home by the sound it makes. That's how important they are to me.

The mother of one logistician phoned up our headquarters and said, 'My son's just arrived back home in France with one of your vehicles - is that normal?' He couldn't bear to be separated from his Land Cruiser so he drove home in it."

We convert some Land Cruisers into top-of-the-range ambulances, with everything you need for a wounded patient or a woman having difficulties in labour. Midwife **Anna Kent** describes the onboard equipment.



## 1 Magnetic blue light

£60

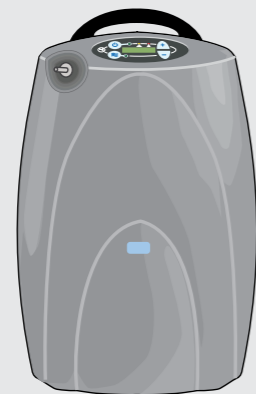
You charge it by plugging it into the cigarette lighter, then stick it on the roof so that people can see



## 2 MSF Stickers

£0.55

You can choose how visible you are, but in some places it's really important for the safety of staff and patients that people know we are MSF.



## 3 Mobile oxygen concentrator

£3,240.66

Powered by batteries, it takes in air and concentrates it to produce oxygen. It's expensive, but it's essential in areas where you can't get an oxygen cylinder.

## 4 Pulse oximeter

£754.92

This does two really important jobs. It shines two wavelengths of light into the patient's finger, electronically counting their pulse at the same time as calculating how much oxygen is in their blood. It's small, mobile and really robust.

## 5 Defibrillator

£1,586.72

If someone has a cardiac arrest on the way to the hospital, this is the only thing that will keep them alive.

## 6 Suction unit

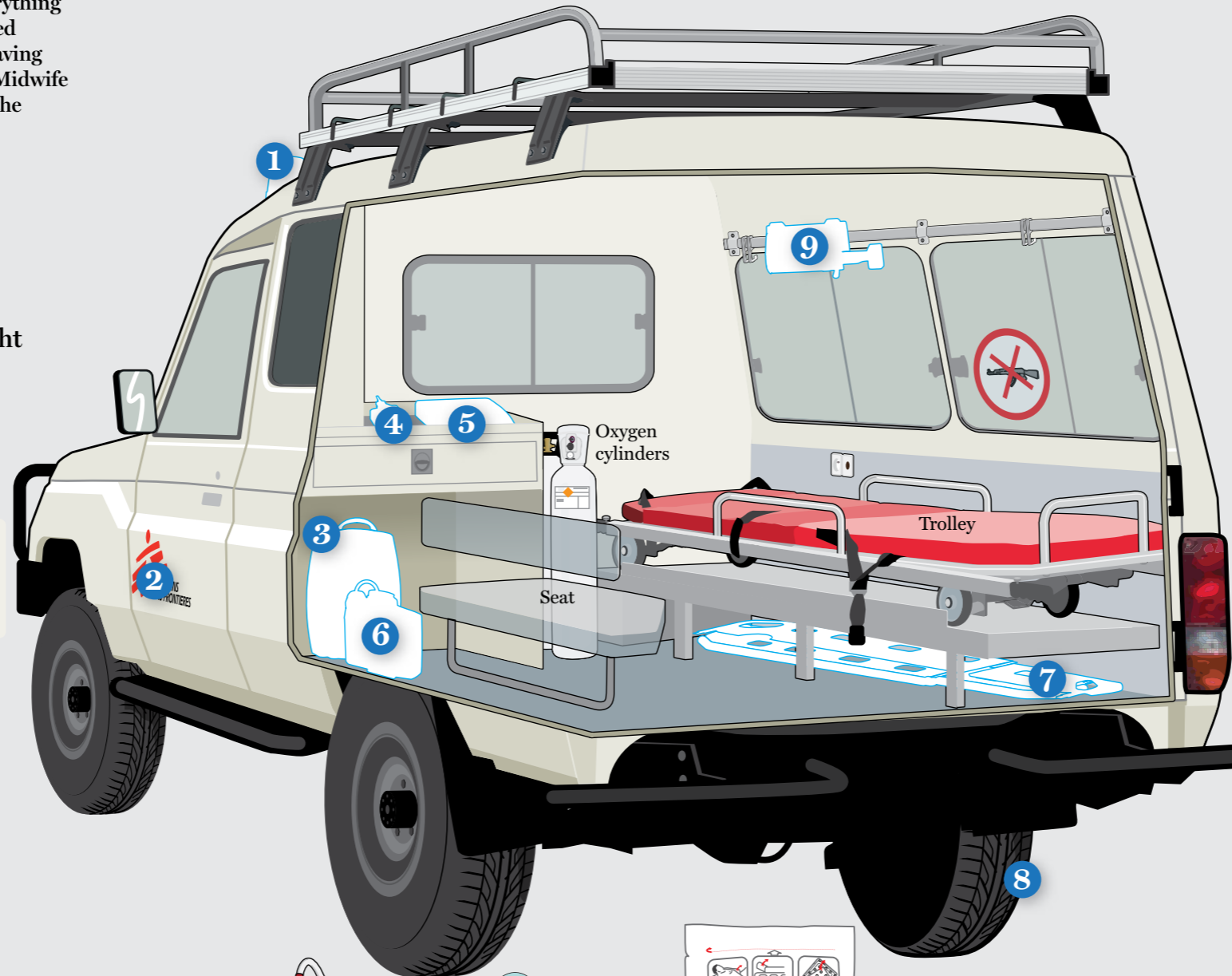
£520

To clear an airway so that patients can breathe. If someone is shot in the chest, for example, you can get a lot of blood coming out of the mouth, which can make breathing difficult.

## 7 'Scoop' stretcher

£588

Excellent for trauma care. With the patient lying on the ground, you push it underneath them and it clips together. The patient doesn't have to move - especially important if they have a neck injury. It's a very fast and safe way of getting somebody out of the scene of



An MSF Land Cruiser ambulance battles through mud on the mountainous roads of Kivu, in the Democratic Republic of Congo

## In numbers

**700-800**  
number of Land Cruisers in use by MSF

**£28,000**  
cost of MSF Land Cruiser, kitted out and ready to go

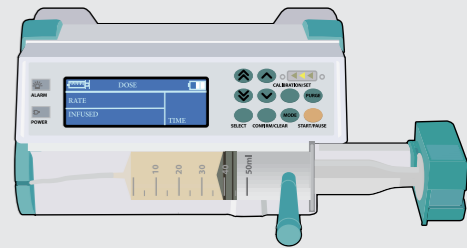
**£68,600**  
cost of MSF Land Cruiser converted into ambulance

**2,500 km**  
average distance driven per month

## 9 Syringe pump

£638.91

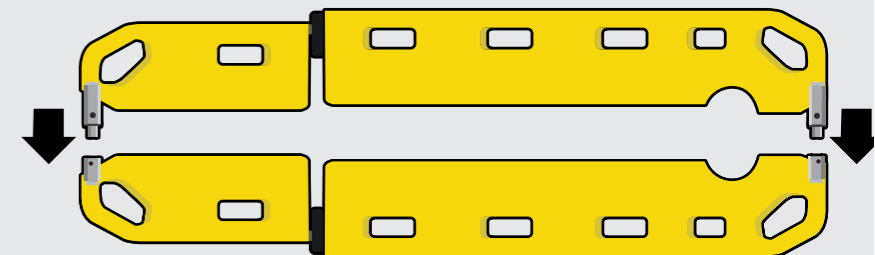
For giving emergency drugs at the correct rate, either very slowly or very fast. Also used for intravenous fluids and infusions.



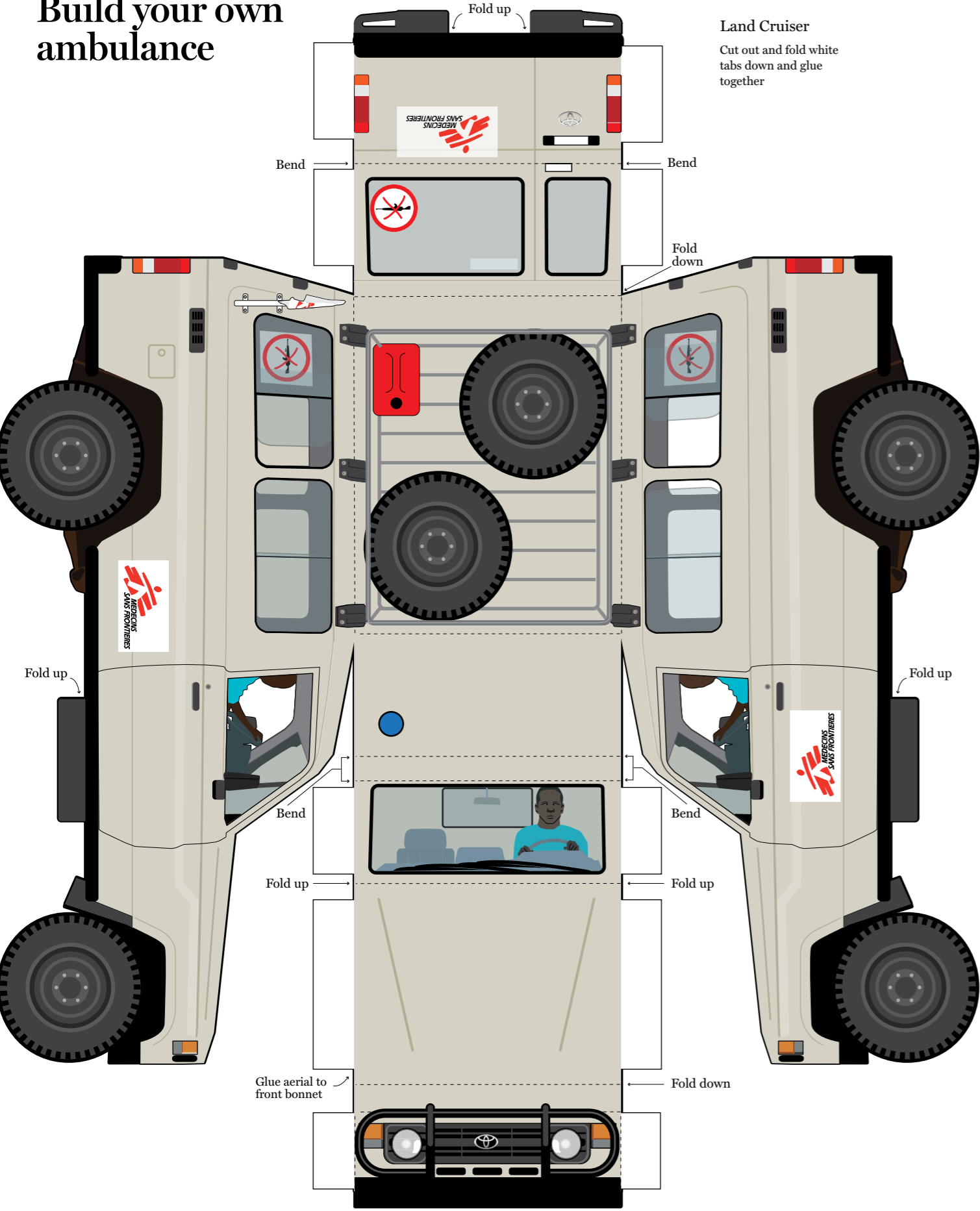
## 8 Tyres

£121

We use four types: sand, mud, road and heavy-duty (for transporting building materials).

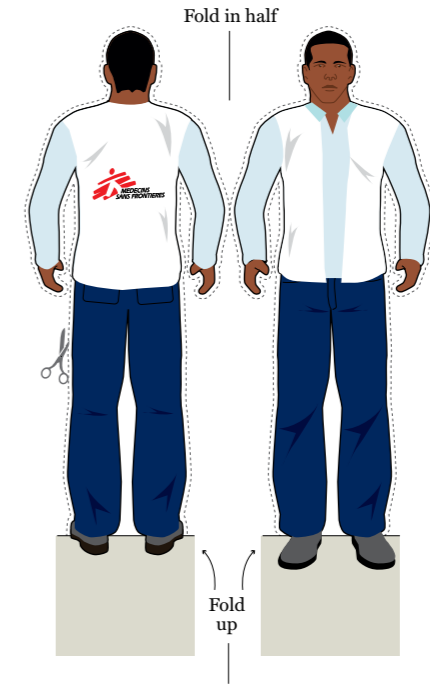
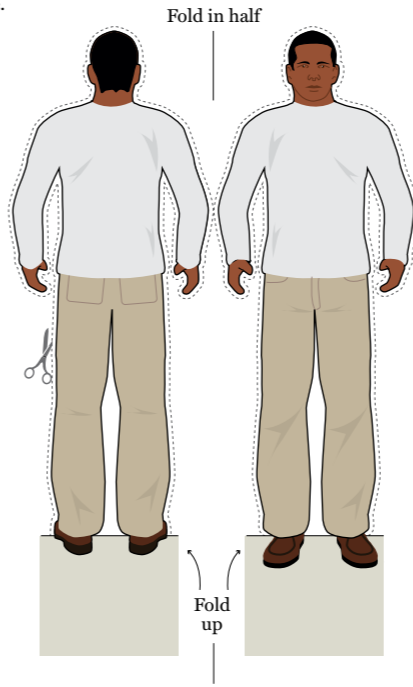


# Build your own ambulance



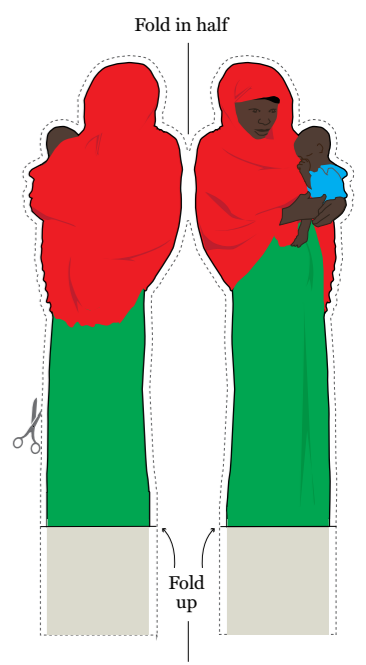
## Stretcher carriers

Fold in half, bend tabs up, glue together and cut along dashed line. Bend hands up and glue to stretcher



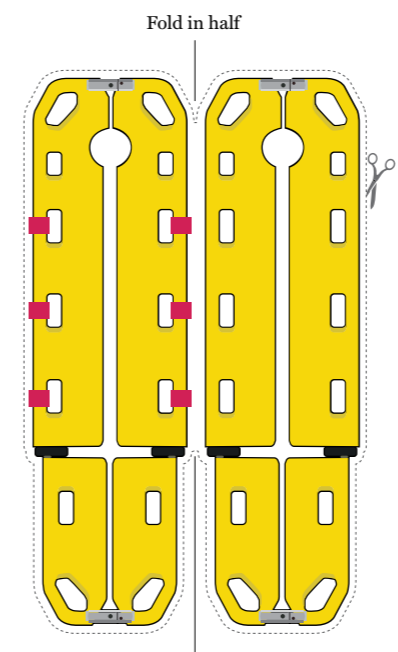
## Woman and child

Fold in half, bend tabs up, glue together and cut along dashed line



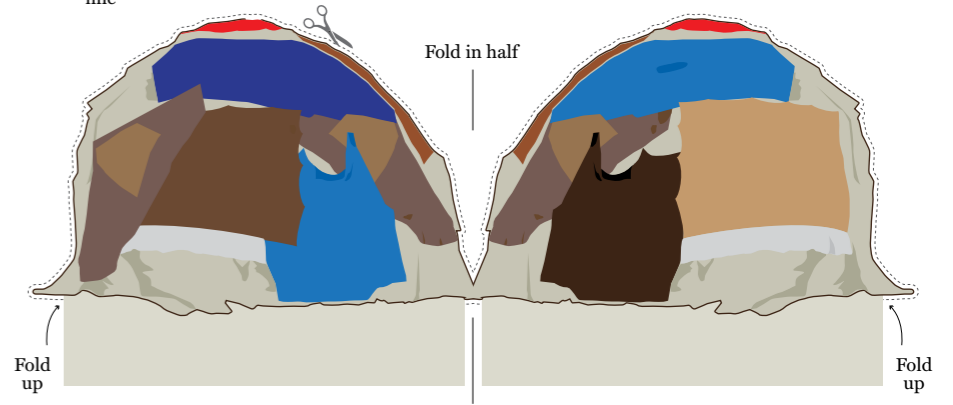
## 'Scoop' stretcher

Fold in half, glue together and cut along dashed line



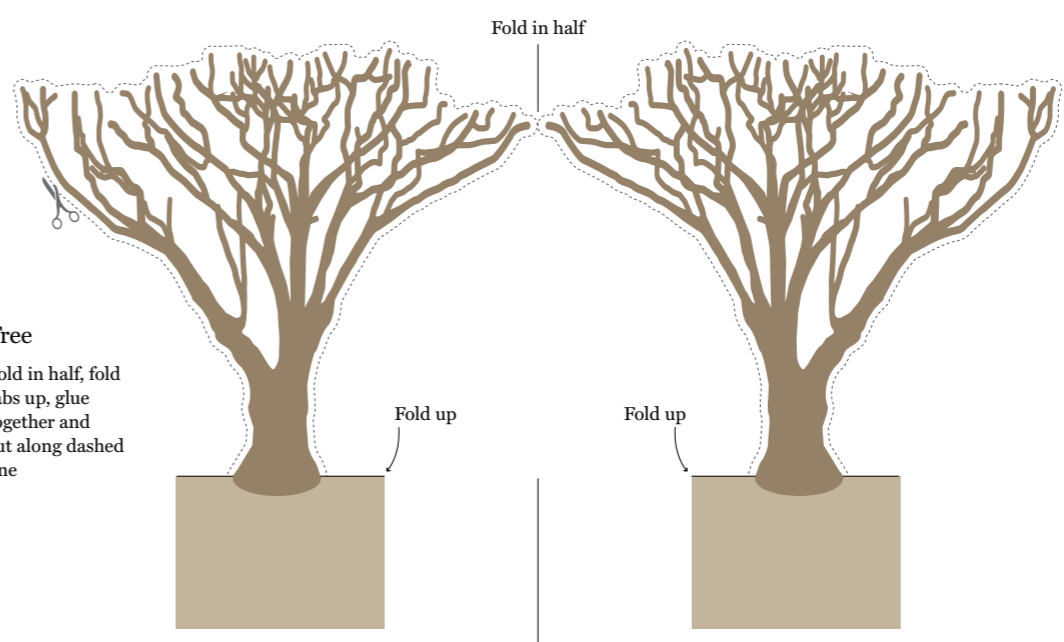
## Refugee tent

Fold in half, fold tabs up, glue together and cut along dashed line



## Tree

Fold in half, fold tabs up, glue together and cut along dashed line



## Child to put on stretcher

Cut along dashed line and fold tabs down

